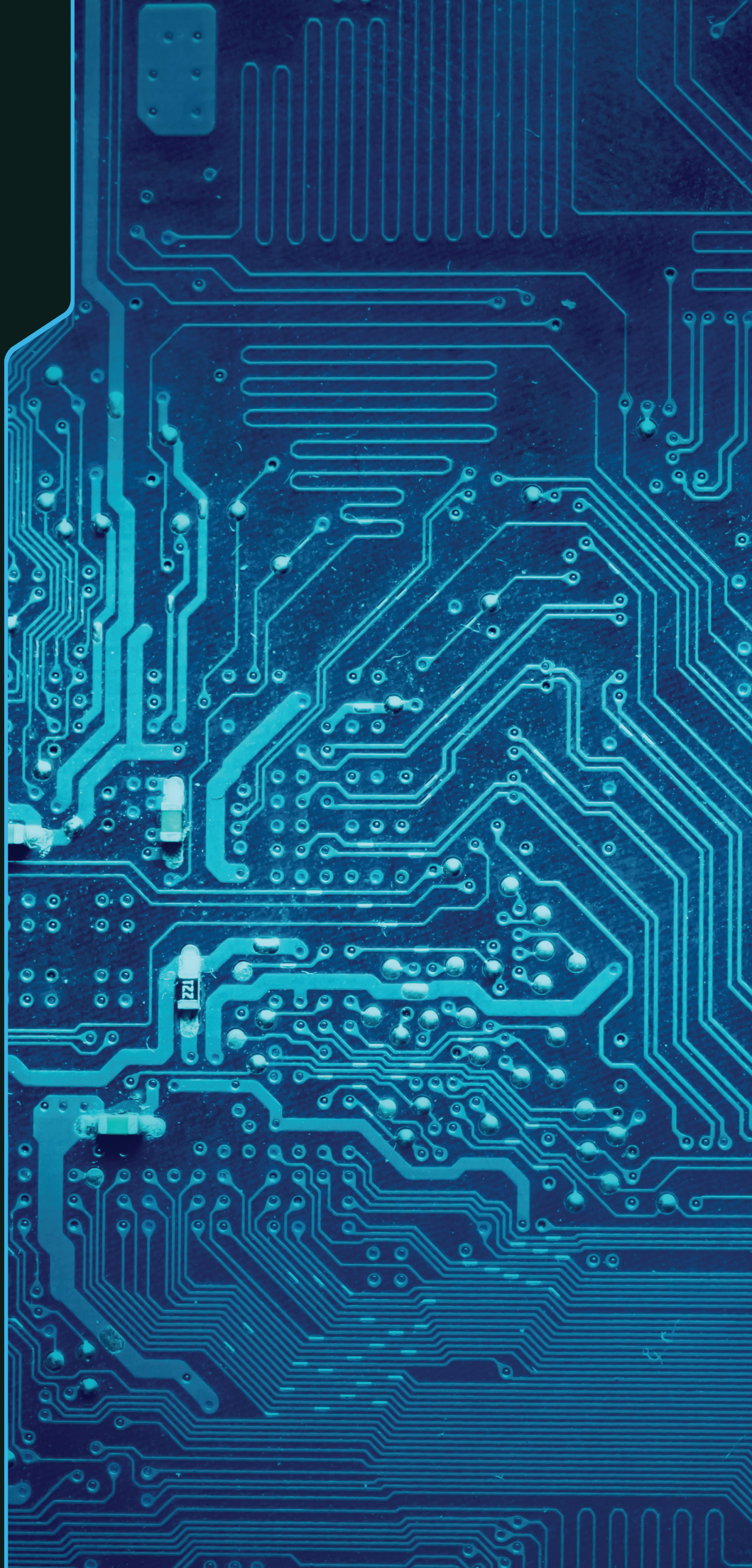




**OPEX**<sup>®</sup>  
CertainScan<sup>™</sup> 5.0





What makes an intelligent scanner intelligent? CertainScan™ does. Often referred to as the brains of the operation, CertainScan has driven every OPEX scanner since 2003. With its ability to build customized scanning jobs and identify page types within a job, it is a labor-saving tool in its own right. CertainScan automates many traditional document preparation activities, including the elimination of patch sheets, classifying of documents, creating indexes, in-line batch editing, customizable output files, both physical and virtual document sorting, enhanced security and much more. CertainScan 5.0 is the most robust CertainScan version ever. Here are a handful of new features:

### 1) ACTIVE DIRECTORY LOGIN

Active Directory helps your IT team more easily manage device access, permissions and network security. Now, all scanner operator and supervisor access can be managed directly by IT for any Falcon scanner on the network.

### 2) USER TRACEABILITY

Rest easier knowing that you can retain a record of every interaction that occurs during the scanning process. These operator interactions are logged for the lifespan of each piece, including scan start, suspended batches, scan resume and any editing that occurs in that batch.

### 3) FILE ENCRYPTION

Protect and securely transmit your and your customer's data. From the very instant that Falcon scanners capture an image, your data can be encrypted. CertainScan's plug-in-based framework is available to support any encryption scheme integrated to our API.

### 4) DIGITAL SIGNATURES

Ensure that captured images and data remain unchanged and authentic. OPEX provides a plug-in based framework (similar to file encryption) to support a wide variety of digital signature schemes.

### 5) DYNAMIC STORAGE PATHS

With dynamic storage paths, jobs are stored, updated and backed-up in one location while site-specific network paths are stored and automatically re-mapped at each site. This provides clarity and consistency at all data capture points within large organizations.

### 6) OUTPUT/BATCH STATISTICS

Output batch statistics provide a better way to record and track how batches are scanned, edited and transformed. This information is appended to a single file, which can be used in downstream processes, or viewed at any time by supervisors to track process exceptions.

### 7) BATCH VALIDATION

Batch validation is designed to check business rules and eliminate missing data in documents or transactions, providing a better way to catch errors and exceptions, save time and money, and minimize costly rescans and additional editing.

### 8) TRANSPORT MODE

Checks and docs can be stack fed on Falcon scanners at burst rates up to 10,000 checks/hour. Custom print capabilities and generous space for output stacking make Falcon scanners ideal for high-volume check processing.

### 9) BATCH TRANSFORM 3.0

Batch Transform provides for digital signatures and encryption at the transform/conversion stage of OPEX workflows. This new version of Batch Transform simplifies customer training and scaling within your operation.

### 10) SCANLINK

This API has been extended to allow for even more information and data to be exchanged with our customer's application, including support for longer barcodes and message fields. This enhanced flexibility increases the value of the metadata that now can be used for downstream processes.

## CERTAINSCAN SUPPORT

As long as you maintain your OPEX scanner under service contract, we will continue to support your investment, both hardware and software versioning. Below is a chart of our document scanning workstations and the CertainScan version supported for each. Please note the progression of operating systems (PC configurations) required for each subsequent version of CertainScan.

PRODUCT (INTRODUCED)	WIN7 32-BIT	WIN7 64-BIT	WIN10 32-BIT	WIN10 64-BIT
AS3600 (2003)	CS 2.60 Win7 32-bit only			
AS3690 (2006)	CS 3.0 Win7 32-bit only			
AS7200 (2010)	CS4.0 recommended CS 3.0, 3.1, 3.2	CS4.0 recommended CS 3.0, 3.1, 3.2	CS 4.0	CS 4.0
DS2200 (2011)	CS4.0 recommended CS 3.0, 3.1, 3.2	CS4.0 recommended CS 3.0, 3.1, 3.2	CS 4.0	CS 4.0
Falcon (2014)	CS4.0 recommended CS 3.0, 3.1, 3.2	CS4.0 recommended CS 3.0, 3.1, 3.2	CS 4.0	CS 4.0 CS 5.0
FalconV (2016)	CS 4.0	CS 4.0	CS 4.0	CS 4.0 CS 5.0
Falcon+ FalconV+ (2019)				CS 5.0

## JOB-LEVEL FEATURES

A job is a collection of parameters the scanner uses to scan documents. These customizable jobs allow you to process documents similarly from run to run. The scanned documents and the information collected about each piece is stored in batches, which consist of one or more transactions, groups or sets. This group can consist of a collection of several page types.

### SOFTWARE FEATURES: JOB LEVEL

- Simple, Configurable Job Set Up and Selection
- Configurable Page Types per Job
- Configurable Data Output Files
- Multiple Modes of Document Separation
- Full and Zonal Blank Page Detect/Deletion (v2.6)
- Flexible Custom Batch Naming (v2.4)
- Streak Detect
- ScanLink (API)
- Physical and Electronic Audit Trail\* (Printer Hardware optional)
- Thickness Based Envelope Detect
- Edge Detect
- WholesaleWorks

### SOFTWARE FEATURES BY VERSION: JOB LEVEL

	2.4/2.6	3.0	4.0	5.0
Three Levels of Document Separation: Batch, Set or Transaction, and Page	X			
Four Levels of Document Separation: Batch, Set or Transaction, Group and Page		X	X	X
Virtual Separators		X	X	X
ID Assist	X	X	X	X
Multi-Function ID Assist*		X	X	X
Enhanced Multi-Function ID Assist* (on-screen instruction, Tag Any Document and multiple gestures)			X	X
Enhance, Edit, and Repair Images		X	X	X
Reclassify and Edit Page Type Data			X	X
Suspend and Resume One Batch	X	X	X	X
Suspend and Resume Multiple Batches		X	X	X
OXI (XML), ODI (ASCII) or IEM Data Format	X	X	X	X
Configurable XML or ASCII output		X	X	X
Single TIFF and JPEG Output	X	X	X	X
Multi-Image TIFF PDF, and PDF/A and Searchable PDF Output		X	X	X
External Digital Capture Software*		X	X	X
Enhanced External Digital Capture Software*			X	X
Indexing Fields			X	X
Configurable Operator Run Screen			X	X
Operator Job Instructions			X	X
Alternate Track Speed			X	X
Alternative Output DPI			X	X
Reference ID* — Job and Set Level	X	X	X	X
Enhanced Reference ID* (Buttons and 100 Items)			X	X
File Encryption				X
Active Directory Support				X
User Traceability Support				X
Digital Signature Support				X

## PAGE-LEVEL FEATURES

Each scanner uses the page-type parameters you set up to classify documents that come into the system. When the scanner processes documents in a job, it gathers data on each item and compares the item to the page types you have designated for that job. This is how the system identifies each document scanned into the system. The system then collects the appropriate data from the document and sorts it according to the current job parameters.

### SOFTWARE FEATURES: JOB LEVEL

- Mark Detect
- Capture Up To 10 Unique Images per Page
- MICR Read w/US & Foreign Check Differentiation
- Damaged Document Detect
- Up to 10 Barcodes Read per Page
- Over 23 Barcode Types Available\*
- Qualify by Height, Length and/or Thickness
- Image Enhancement Tools/Kofax VRS\*
- Image Edge\*
- A Variety of OCR Fonts Read

### SOFTWARE FEATURES BY VERSION: JOB LEVEL

	2.4/2.6	3.0	4.0	5.0
8 Page Types per Job	X			
12 Page Types per Job	optional	X	X	X
Full and Zonal Blank Page Detect/Deletion at Snippet Level		X	X	X
Image Toggling		X	X	X
Single Tiff and JPEG Output	X	X	X	X
Multi-Image TIFF PDF, and PDF/A and Searchable PDF Output		X	X	X
Indexing			X	X
Dynamic Storage Paths				X
Transport Mode			X	X
Batch Validation			X	X
Enhanced Scanlink			X	X
Batch Monitor				X

## CERTAINSCAN EDIT™

Edit live or suspended batches either during scanning or post-scanning with CertainScan edit™. Copy and paste pieces within the batch, knowing that all of the associated metadata and image snippets are duplicated within their designated destination. Choose your level of editing: recover an interrupted batch and clean up several items, edit the metadata only, or perform a full edit of that batch — inserting, deleting or moving images — before outputting batches to the next step in your workflow.

### SOFTWARE FEATURES: CERTAINSCAN EDIT

- Rescan Page in Current (Live) Batch
- Delete Individual or Select Pages from End in Current (Live) Batch
- Void Item or Transaction in Current (Live) Batch

### SOFTWARE FEATURES BY VERSION: CERTAINSCAN EDIT

	2.4/2.6	3.0	4.0	5.0
OPEX Edit Software available on External PC*		X	X	X
Reclassify and Edit Page-Type Data		X	X	X
Suspend and Resume One Batch	X	X	X	X
Suspend and Resume Multiple Batches		X	X	X
Resume Batch(es) on External PC		X	X	X
Insert, Delete, Cut, Paste, Drag, and Drop Images and Pages in Suspended Batch		X	X	X
Maintain Metadata at the Piece Level in Suspended Batch		X	X	X
Insert, Delete, Cut, Paste, Drag, and Drop Images and Pages in Current (live) Batch on Scanner			X	X
Maintain Metadata at the Piece Level in Current (Live) Batch on Scanner			X	X

## OPEX TRANSFORM™

OPEX Transform™ is a configurable utility that provides OPEX standard output files or custom metadata. Simply stated, Transform provides a solution to map your specific workflow. Convert standard images into multipage TIFF, PDF, PDF/A, JPEG2000, JBIG and Searchable PDF. Control your own data-naming conventions and configure the layout and mapping of data files to meet your project or system requirements.

SOFTWARE FEATURES BY VERSION: OPEX BATCH TRANSFORM	2.4/2.6	3.0	4.0	5.0
OPEX Batch Transform Software available on External PC*		X	X	X
Configurable XML or ASCII Metadata Output		X	X	X
Single TIFF and JPEG Output	X	X	X	X
Multi-Image TIFF PDF and PDF/A Output		X	X	X
Image Compression (LZW, Group 4, JPEG, Deflated)		X	X	X
Configurable Naming and Mapping		X	X	X
Batch Transform Monitor		X	X	X
Batch Filter Profiles – Remove images and/or data prior to Transforming			X	X
Batch Split – Transform single mixed batch into multiple batches			X	X
Batch Chain – Transform single batch into multiple different configured batches			X	X
Batch Index – Used in conjunction with CertainScan’s Index feature			X	X